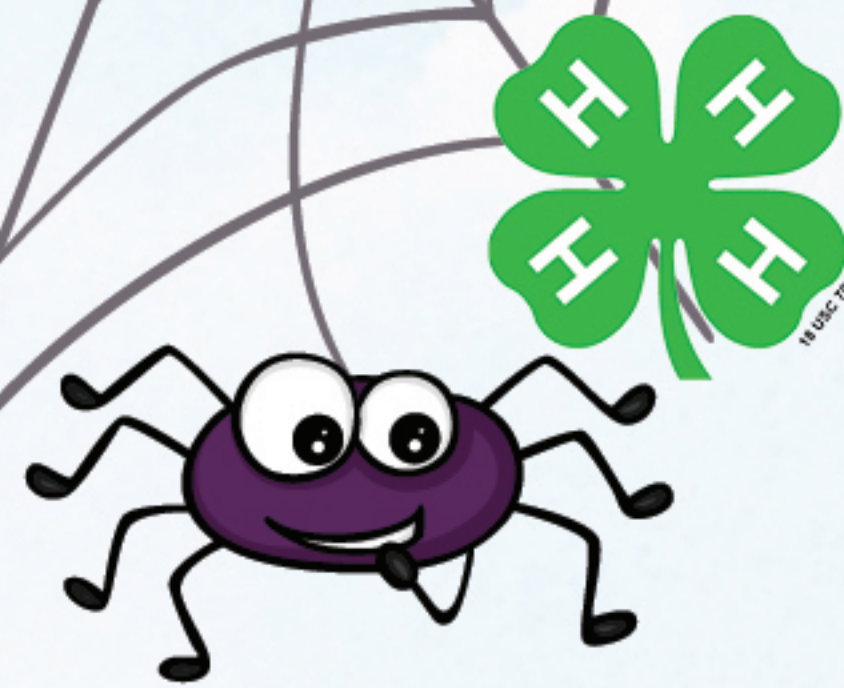


# RICHLAND COUNTY FAIR



September  
7, 8, 9, 10, 11, 2022

**MR. ED'S  
MAGICAL  
MIDWAY RIDE  
WRISTBANDS**

UNLIMITED RIDES  
BY WRISTBANDS

THURSDAY 5PM-9PM

FRIDAY 5PM-9PM

SATURDAY 12PM-4PM

SUNDAY 12PM-4PM

**TRY THE AIR MAXX!**

## TUESDAY, SEPTEMBER 6

7:30am - 6:00pm Entry Day for Foods, Flowers, House Plants & Photography

## WEDNESDAY, SEPTEMBER 7

Carnival & Vendor Set-up

8:00am Judging begins for Foods, Food Preservation & Photography

9:00am Flowers & House Plants

10:00am-4:00pm

5:00pm

Entry Day for all Livestock **(except Dairy cattle)**

Vet Check

## THURSDAY, SEPTEMBER 8

### MR. ED'S MAGICAL MIDWAY 5 PM

7:00am-11:30am Entry Day for Dairy Cows, Yearlings & Calves

7:30am-6:00pm All Non-Livestock Exhibits accepted

10:00am Sheep Show & Meat / Dairy Goat Show

3:00pm

6:00pm

7:00pm

Poultry Show, Poultry & Poultry Products

Rabbits Showmanship

Beef Heifers

## FRIDAY, SEPTEMBER 9

### MR. ED'S MAGICAL MIDWAY 5 PM

10:00am-6:00pm Life Size Balloon Creations Show

2:00pm-10:00pm Axe Throwing - **No Open Toed Shoes**

With 2 additional life size lawn games

8:00am Swine

9:00am Rabbits

9:00am All Non-Animal Exhibits Judging

12:00pm Beef

7:00pm

### Hard Hit Promotions

#### Demolition Derby

Contact Joe at 608-732-4523

**Beer Garden In Grandstand Area - No Carry Ins**

### GATE ADMISSION:

#### SEASON PASS:

\$18.00 Adults (16 & over); \$9.00 Kids (6-15)

**DAILY ADULTS (16 & over): \$8.00**

**SENIORS (62 & over):**

Saturday & Sunday \$5.00

**VETERAN, MILITARY & FIRST RESPONDER:**

Saturday & Sunday \$5.00 must show ID

**DAILY Child (6-15): \$3.00**

## DEMOLITION DERBY



**MEAT  
ANIMAL  
SALE**

Starting time  
is 6:00 PM

**High Mileage**  
ROCK N ROLL

with grandstand and track access  
- Beer Garden in Grandstand Area  
- No carry ins

## SATURDAY, SEPTEMBER 10 *Childrens Day*

### SENIOR DAY - GATE \$5

**VETERAN, MILITARY & FIRST RESPONDER DAY - \$5 MUST SHOW ID**

### MR. ED'S MAGICAL MIDWAY NOON

#### CULVER'S SCOOP TOKEN FOR FIRST 500 KIDS

9:00am Dairy Judging

10:00am-Noon Kids Activity Center - Connection Building

11:00am-8:00pm Six Virtual Reality Booths - Connection Building

10:00am-6:00pm Life Size Balloon Creations

10:30am-2:00pm Crime Stoppers Finger Printing

2:00pm-10:00pm Axe Throwing with Black Light Event

#### No Open Toed Shoes

With 2 additional life size lawn games

4:00pm

6:00pm

7:00pm

Pedal Pull

Meat Animal Sale

#### FREE LIVE-High Mileage

with grandstand and track access

**Beer Garden In Grandstand Area-No Carry ins**



## SUNDAY, SEPTEMBER 11

### SENIOR DAY - GATE \$5

**VETERAN, MILITARY & FIRST RESPONDER DAY - \$5 MUST SHOW ID**

### MR. ED'S MAGICAL MIDWAY NOON

#### 12:00PM-4:00PM UNLIMITED WRISTBAND RIDES

11:00am-12:00pm Life Size Balloon Creations

with Balloon Magic Show

12:00pm Harness Racing

12:00pm-1:00pm

12:30pm

1:00pm-2:00pm

4:00pm

Magic Show in Connection Building

Little Britches Showmanship Contest

Life Size Balloon Creations with

Balloon Magic Show

#### Release of Projects

**HARNESS  
RACING**

Contact:

SCOTT GALD 604-6456



The Richland County Fair is sponsored by these community-minded businesses:

4-H

Added Touch Floral

American Legion

Ash Creek Plumbing,

Heating & Electric

Compeer Financial

Community First Bank

Coy Trucking, LLC

Culver's

Dayton Ridge Runners ATV/UTV and Snowmo-  
bile Club

Fairgrounds Improvement  
Committee/FIC

Fillback Ford

Frito Lay

Genuine Telecom

Homesteaders

Jones Chevrolet-Buick

Kiwanis International

Kloehn Trucking

Lime Ridge Ag Supply

Nature's Way

Olson Trucking

Premier Co-op

Richland Center City Utilities

Richland Center City

Police Department

Richland Center Lion's Club

Richland Center Shopping News

Richland County

Ambulance Service

Richland County

Harness Association

Richland County

Highway Department

Richland County

Sheriff's Department

Richland County Bank

Richland Locker Company

Richland Observer

Richland School District

Rockbridge Sawmill

Robin's Nest

Royal Bank

Schreiber Foods

Simpson Tractor

SW WI Wind-Up Circuit

The Peoples Community Bank

Town & Country Sanitation

Troxel Farms

Unlimited Clicks Photography

Vetesnik Power Sports

Wallace Electric

Walsh's Ace Hardware

WCCU Credit Union

Wegner Auto Service

Wertz Plumbing & Heating

WPPI Energy

WRCO AM-FM

Ziegler Ag Equipment

Call: 608-647-6859 or email: carla.doudna@co.richland.wi.us for further information